

VPH Series

High Purity Virgin Polypropylene Housings



- 100% Virgin Polypropylene housing provides economical alternative for high purity applications
- Rugged design provides long, trouble-free service
- Ultra-smooth, corrosion resistant surface ideal for sensitive fluids
- Low cost alternative to stainless steel housings
- Available in Double Open-End (DOE) and 222 cartridge configurations
- Holds 10 or 20 inch cartridge lengths
- Meets FDA requirements for potable water and food and beverage applications.
- Optional mounting bracket available for easy installation

Applications

| | |
|-----------------|--------------------------|
| Water | Chemicals |
| Food & Beverage | Electronics |
| DI Water | Inks / Paints / Coatings |
| Coolants | Pulp & Paper |

Specifications & Operating Parameters

Maximum Operating Pressure

125 psig (20.7 bar) @ 125°F (93°C)

Connections

Inlet /Outlet:
Standard – 3/4" FNPT

Materials of Construction

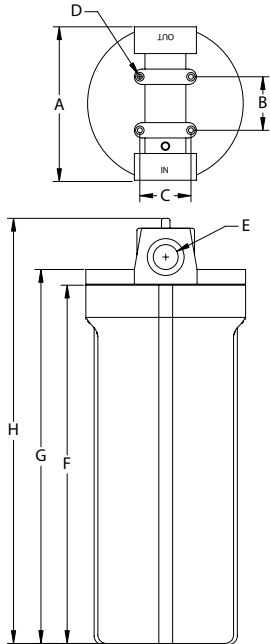
Head / Sump: 100% Virgin Polypropylene

Gaskets

Standard Viton
Optional EPR

Dimensions

| MODEL | A | B | C | D | E | F |
|------------|-----------------|----------------|----------------|-----------------|-----------------|------------------|
| VPH-10-DOE | 4.72" (12.0 cm) | 1.57" (4.0 cm) | 1.18" (3.0 cm) | 0.16" (.40 cm) | 11.8" (30.0 cm) | 10.5" (26.7 cm) |
| VPH-12-222 | 5.35" (13.6 cm) | 2.22" (5.6 cm) | 2.28" (5.8 cm) | 0.23" (0.58 cm) | 14.0" (35.6 cm) | 12.0" (30.5 cm) |
| VPH-20-DOE | 5.35" (13.6 cm) | 2.22" (5.6 cm) | 2.28" (5.8 cm) | 0.23" (0.58 cm) | 22.8" (57.9 cm) | 20.47" (52.0 cm) |
| VPH-20-222 | 5.35" (13.6 cm) | 2.22" (5.6 cm) | 2.28" (5.8 cm) | 0.23" (0.58 cm) | 22.8" (57.9 cm) | 20.47" (52.0 cm) |

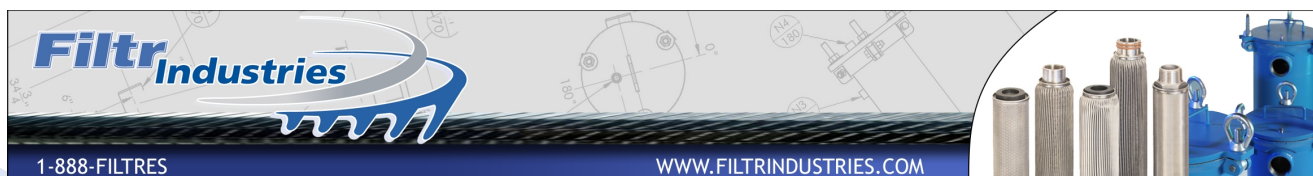


Models

| MODEL | DESCRIPTION - CARTRIDGE LENGTH & CONNECTOR / O-RING | OPTIONAL BRACKET KIT |
|------------|--|----------------------|
| VPH-10-DOE | 9 7/8" Double Open End Cartridge / Viton O-ring | BK1 |
| VPH-12-222 | 10" with 222 Single Open End Cartridge / Viton O-ring | BK2 |
| VPH-20-DOE | 20" Double Open End Cartridge / Viton O-ring | BK2 |
| VPH-20-222 | 20" with 222 Single Open End / Flat Cartridge / Viton O-ring | BK2 |

Filter Housings

Shelco manufactures a full line of filter housings. From our rugged single cartridge housings to our heavy duty multi-cartridge housings and bag filter housings, Shelco is the perfect choice for your filtration solutions.



MicroSentry™, MicroVantage™, Shelco Filters® and the Shelco logo are registered trademarks of the Tinny Corporation. Shelco Filters is a division of the Tinny Corporation.